

IDENTIFICATION, QUANTITATIVE DETERMINATION & ANTIDEPRESSANT ACTIVITY OF CHLOROGENIC ACID & GALLIC ACID FROM *MORUS ALBA* LEAVES

Shiv Bhadra Singh^a, Meraj Ali^b, Aaditya Singh^b

^aHygia Institute of Pharmacy, Lucknow, Uttar Pradesh, India

^bFaculty of Pharmacy Aryakul Group of Colleges, Lucknow, Uttar Pradesh, India

Email: shiv.1013@gmail.com

ABSTRACT - Objective: The present study is considered to estimate preliminary phytochemical components, physicochemical parameters, HPTLC chromatographic studies and antidepressant activity of chlorogenic acid & gallic acid present in extracts of *morusalba* leaves.

Methods: Total phenol content, Total flavonoid content, Total tannin content, HPTLC fingerprinting analysis for compounds like chlorogenic acid & gallic acid responsible for antioxidant activity and antidepressant activity by TST & FST.

Result: Preliminary phytochemical studies shows the presence of good phenol (21.75 ± 1.21) and flavonoid (14.83 ± 2.34) content. HPTLC fingerprinting by comparing extract values with standards available of chlorogenic acid & gallic acid also shows the presence of these components in the methanolic and ethanolic extracts of *morusalba* leaves, which were further used to screen antidepressant activity and shows substantial antidepressant activity in the plant.

Conclusion: Our results recommends that *morusalba* leaves are may be demonstrated to be an acceptable natural antioxidant and antidepressant with various bioactive components used for the treatment of numerous other ailments.

INTRODUCTION

Natural plants are used as very good source of nutrition persistent food as well as source of various chemical constituents operative in curing various diseases which may demand as the biologically active constituents. At the present natural plants are very much in petition in the form of drugs because of their fewer side effects, they are considered the potential resources of various bioactive compounds and are also easily available from the natural sources. In the same context *Morus alba*, the Mulberry plant which is basically famous for sericulture, the fabrication of silk done through the silkworm and the leaves are also used to diminish the symptoms of diabetes in vernacular medicine as well as for improving cardio-metabolic risks, including antihyperglycaemic, antihyperlipidaemic, antiobesity, antihypertensive, antioxidative, anti-inflammatory, anti-atherosclerotic and cardioprotective effects¹ in Chinese medicine used to treat constipation, to tonify the blood, prematurely grey hair, cough, edema, to promote urination, fever, headache, dry & sore eyes² and so many more, So, the leaves is used further in this study to explore some more about the biological activity of leaves.

Mulberry plant belongs to genus *Morus* having 68 species which are unisex flowering plants belonging to family Moraceae of the Urticales subclass. The plant is a shrub or tree (20 to 30 feet high) often the size of a small apple tree, having leaves which are thin, glossy, and light green in color with 5 lobes or has one lobe, two lobes, three lobes, or no lobes at all. *Morus alba* L. is also known as White Mulberry and can be grown from seed as well as planted from large cuttings of root readily. Commonly, the plantation is upraised in a block foundation with arrangement of 6 feet x 6 feet, or 8 feet x 8 feet, as plant to plant and row to row spaces. The plants are generally trimmed once a year during the monsoon season (July – August) to a height of 5–6 feet and allowed to grow with a maximum of 8–10 shoots at the top.³ The plant is widely distributed in India, China, Japan, North Africa, Arabia, South Europe, etc.

Physicochemical studies

The physicochemical parameters like extract characteristics (consistency, color in day light, fluorescence analysis & % yield), moisture content, Chlorophyll content, ash value etc. in extracts were performed using methods reported in AOAC 1990¹⁰. Quantitative phytochemical analysis for total phenol content, total flavonoid content, total tannin content were also estimated and results were tabulated. Gallic acid, Rutin and tannic acid were taken as standards for estimation of total phenol, flavonoid and tannin content respectively.

HPTLC Chromatography Densitometry

Five working standard solutions from methanol were freshly prepared in concentration ranging from 0.1 – 0.5 mg/ml for calibration curve from stock solution of standards of 1 mg/mL. The working solution of standards (1mg/ml) and samples (10mg/ml) were freshly prepared in similar solvent.

The mobile phase used for development of HPTLC plates was toluene: ethyl acetate: formic acid in a ratio of 7: 2.5: 0.5 v/v for gallic acid and ethyl acetate: acetic acid: formic acid: water in a ratio of 10:1.1: 1.1: 2.3 v/v for chlorogenic acid. The analysis was carried out using Camag HPTLC system equipped with Linomat-V applicator and 100 µl syringe. The samples were spotted against the standards using microliter syringe over the pre-coated silica gel 60 F254 HPTLC plates, and development of the applied plate was carried out in pre-saturated Camag twin-trough chamber. Then the plates are dried and visualized in UV light of 254nm and 366nm wavelength and the results are interrelated in Tables 4-5 and Fig.2-3. The percentage of chlorogenic acid and gallic acid was calculated by using the formula.¹¹

$$\frac{(\text{sample area} \times \text{standard dilution} \times \text{purity})}{(\text{standard area} \times \text{sample dilution} \times 100)} \times 100$$

Antidepressant Activity

Animals

Albino mice of either sex were acquired from the Central Animal House, Aryakul College of Pharmacy & Research (Reg.No- 1896/PO/Re/S/16/CPCSEA). Thirty swiss albino mice (25-35 gms body weight) of either sex were randomly selected and grouped into 5 groups (n=6). They were accustomed and housed in animal house with 12hr: 12hr light-dark cycle at 27±2°C temperature and 45-55% RH. Food and water delivered ad libitum. The work was permitted by the Institutional Animal Ethical Committee (IAEC). Control animals were doped with distilled water. Drugs like imipramine (10mg/kg), test drug *Morus alba* leaves extract (100 mg, 200mg, 400mg/kg) were dissolved in distilled water and doped orally once daily for 7 days (one week). On 8th day tests were reiterated.

Acute toxicity studies

The process for acute toxicity of ethanolic leaf extract of *Morus alba* was monitored as per the OECD guideline no.423 (Acute Toxic Class Method) (OECD, 2002). A dose of 800, 1000, 2000mg/kg bodyweight is overseen and animals were observed for 15 days.

Tail suspension test (TST): A mouse was drooped on a wire in an upside down position so that its nostrils just touch the water surface in a vessel. After initial enthusiastic movement, the mouse undertakes a motionless posture and the period of motionless posture during five minutes reflection was noted. This test is consistent and a prompt screening method for antidepressants, including those involving the serotonergic system.¹²

Forced swimming test (FST): The rats were placed a cylinder (45x20cm) holding 38 cm water (25±2°C), so that the rat could not touch lowermost part of cylinder with its hind limb or tail or climb over the verge of the chamber. Two swim periods were accompanied, an initial fifteen minutes pre-test, followed by five minutes test 24 hour later. Drug was doped after pre-test. The period of motionlessness (remained floating in water without harassed and making only those movements necessary to keep its head above water) during five minutes test period was noted.¹³

RESULT & DISCUSSIONTable 1. Preliminary phytochemical screening of Pet ether, ethanolic&methanolic extract of *Morus alba* leaves

Constituents	Pet. Ether extract	Ethanolic extract	Methanolic extract
Alkaloids	-	++	+++
Carbohydrates		+	++
Caumarin	+	++	+++
Flavonoids	+	+++	++
Fixed oil	++	-	-
Glycosides	-	+	+
Gums and resins	-	-	-
Mucilages	-	+++	+++
Proteins & amino acid	-	++	+++
Saponins	-	-	-
Steroids	+	-	-
Tannins	-	+++	++

+++ High, ++ Moderate: + Slight: - Negative

Table 2. Extract characteristics

Types of solvent	Consistency	Colour in day light	Fluorescence analysis		% w/w
			Short UV	Long UV	
Ethanol	Semi-solid	Brownish black	Reddish black	Brownish black	5.82
Ethanol	Solid	Reddish brown	Reddish brown	Brown	6.32
Methanol	Solid	Brown	Greenish brown	Brown	7.14

Table 3. Physiochemical studies & quantitative phytochemical analysis

S.No.	Physiochemical Parameters	Values
1.	Moisture contents	3.1 ± 0.3%
2.	Ash value	12.1 ± 0.04%w/w
3.	Chlorophyll content	1.97 ± 0.03
4.	Total phenolics (mg gallic acid equivalent/g)*	21.75 ± 1.21
5.	Total flavonoid (mg rutin equivalent/g)*	14.83 ± 2.34
6.	Total tannin (mg tannic acid equivalent/g)*	7.21 ± 1.75

(*mean ± S.D, n=3)

Table 4.HPTLC- Phenols profile of methanolic extract of Morus alba leaves for chlorogenic acid

Peak	R _f	Height (AU)	Area (AU)	Assigned substances
1	0.01	612.1	14992.1	Unknown
2	0.04	603.5	8821.9	Unknown
3	0.06	515.2	26092.5	Chlorogenic acid
4	0.14	328.3	12914.6	Unknown
5	0.20	602.5	20777.9	Unknown
6	0.25	250.1	4616.3	Unknown
7	0.27	450.6	13821.7	Unknown
8	0.31	456.5	11207.6	Unknown
9	0.36	298.3	12070.3	Unknown
10	0.43	166.4	5633.1	Unknown
11	0.47	167.5	4345.4	Unknown
12	0.51	136.3	3452.4	Unknown
13	0.58	133.8	3561.1	Unknown
14	0.61	133.1	4753.1	Unknown
15	0.65	114.3	3271.5	Unknown
16	0.69	151.6	6863.0	Unknown
17	0.75	203.0	10216.0	Unknown
18	0.82	188.1	6897.9	Unknown
19	0.87	192.5	7083.6	Unknown

Table 5. HPTLC- Phenols profile of methanolic extract of Morus alba leaves for gallic acid

Peak	R _f	Height (AU)	Area (AU)	Assigned substances
1	0.05	27.4	842.4	Unknown
2	0.47	18.7	196.6	Unknown
3	0.67	38.3	959.1	Gallic acid
4	0.71	72.3	1855.8	Unknown
5	0.77	167.7	6291.6	Unknown
6	0.83	192.5	10855.3	Unknown
7	0.93	14.4	346.6	Unknown

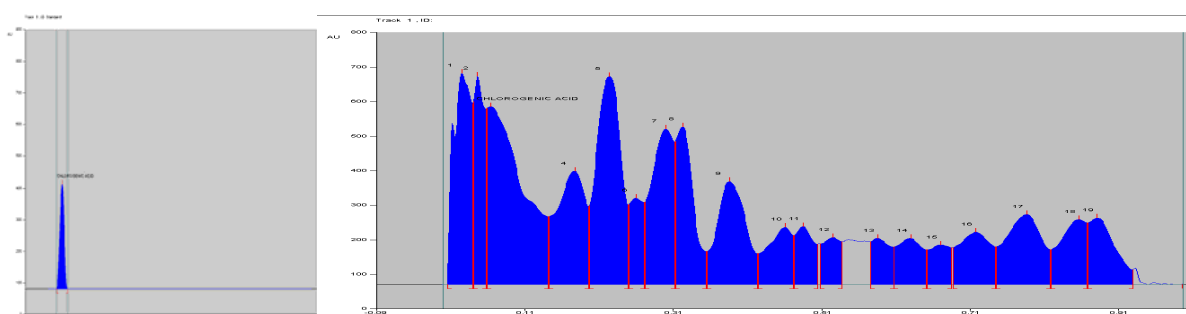


Fig A.

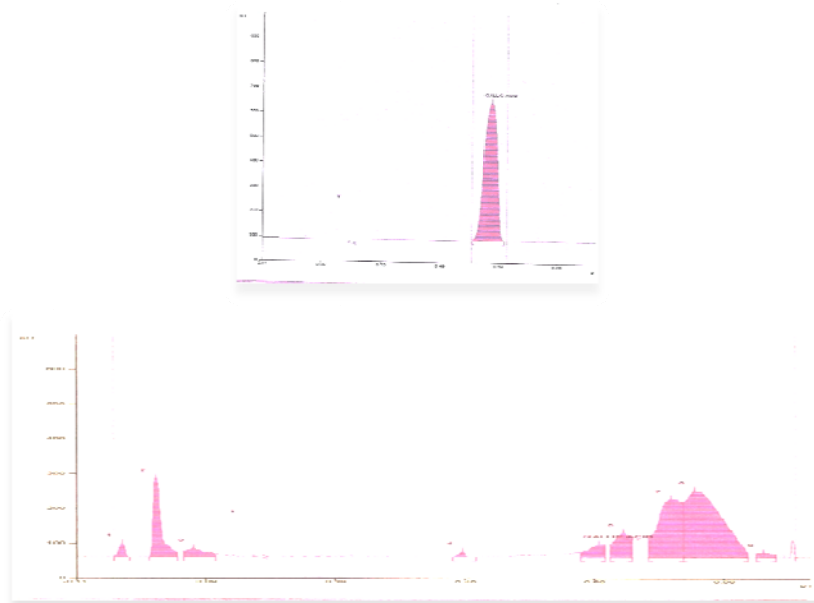
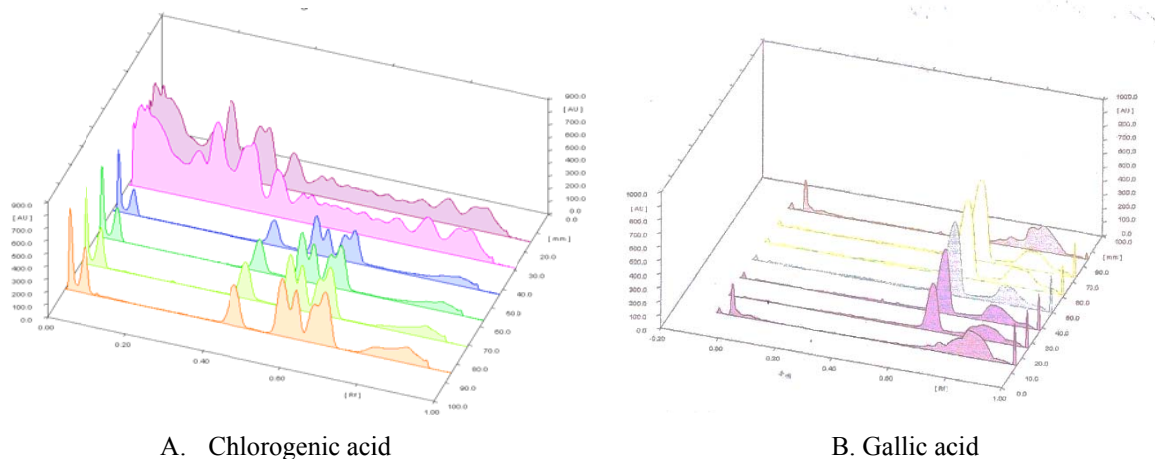


Fig. B.

Fig 2. HPTLC densitogram for methanolic extract with their respective standards:

A. Chlorogenic acid B. Gallic acid



A. Chlorogenic acid

B. Gallic acid

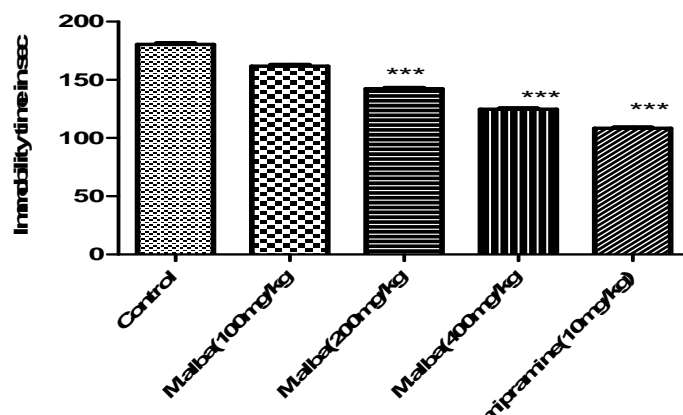
Fig 3. 3D diagram of HPTLC densitograms

Results of Antidepressant activity:

Table 1: Effect of *Morus alba* leaves extract on immobility time in tail suspension test

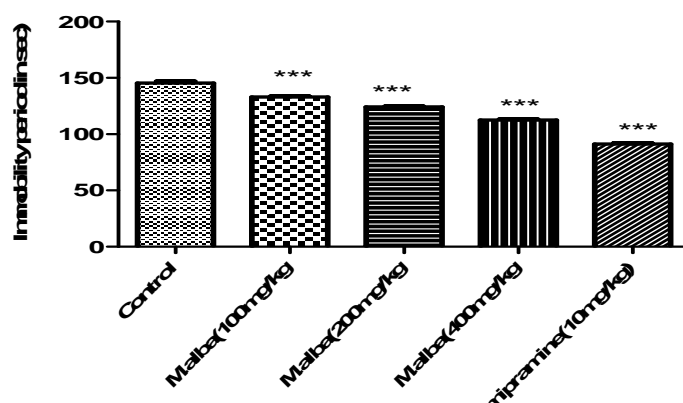
Treatment	DOSE (mg/kg)	Immobility time (in sec)
Vehicle Control(6)	-	180.40±2.70
<i>M.alba</i> (6)	100	161.90±2.59***
<i>M.alba</i> (6)	200	142.4±1.81***
<i>M.alba</i> (6)	400	124.40±1.64***
Imipramine (6)	10	108.00±2.07***

Values are given as mean ±SEM (N=6 in each group), ***P<0.001, as compared to control

Table 2: Effect of *Morus alba* leaves extract on immobility time in Forced swimming test

Treatment	DOSE (mg/kg)	Immobility time (in sec)
Vehicle Control(6)	-	145.40±3.84
<i>M.alba</i> (6)	100	133.00±2.12***
<i>M.alba</i> (6)	200	124.20±1.42***
<i>M.alba</i> (6)	400	112.60±1.94***
Imipramine (6)	10	91.20±2.32***

Values are given as mean \pm SEM (N=6 in each group), ***P<0.001, as compared to control



Ample amount of free radicals are constantly produced in the body through different biochemical reactions, if the level of these free radicals surpasses the normal value, it leads to oxidative impairment in cells as well as tissues leading to various degenerative diseases in the body. Plant extracts are frequently used as natural source of antioxidants which can prevent these degenerative disorders. Antioxidants neutralise the free radicals in the body which improves the disease conditions. Chlorogenic and gallic acid are antioxidants present in the plant *Morus alba*, which is demonstrated in the article by using phytochemical screening and HPTLC fingerprinting. These in *-vitro* antioxidants can fight against free radicals produced in the body and hence results in improvements in disease conditions of depression and other ailments like diabetes and cardiovascular diseases. Through our results it was demonstrated that *morus alba* leaves are may be acceptable as a natural antioxidant and antidepressant with various bioactive components used for the treatment of numerous other ailments.

References:

- [1] Thaipitakwong, T.; Numhom, S.; Aramwit, P. Mulberry leaves and their potential effects against cardiometabolic risks: a review of chemical compositions, biological properties and clinical efficacy. *Pharmaceutical Biology*; 2018; 56(1); 109-118.
- [2] Sharma, A.; Krishna, V.; Kaur, P.; Rayal, R. Characterization and screening of various Mulberry varieties through morpho-biochemical characteristics. *Journal of Global Biosciences*; 2015; 4(1); 1186-1192.
- [3] Killedar, S. G.; Pawar, A. V. Preparation of herbal tea from mulberry leaves. *Journal of Medicinal Plants Studies*; 2017; 5(2): 325-328.
- [4] Kim, S. B.; Chang, B. Y.; Hwang, B. Y.; Kim, S. Y.; Lee, M. K. Pyrrole alkaloids from the fruits of *Morus alba*. *Bioorganic & Medicinal Chemistry Letters*; 2014; 24(24), 5656-5659.
- [5] Asano, N.; Yamashita, T.; Yasuda, K.; Ikeda, K.; Kizu, H.; Kameda, Y.; Ryu, K. S. Polyhydroxylated Alkaloids Isolated from Mulberry Trees (*Morus alba*L.) and Silkworms (*Bombyx mori*L.). *Journal of Agricultural and Food Chemistry*, 2001; 49(9), 4208-4213.

- [6] Wang, X.; Kang, J.; Wang, H-Q.; Liu, C.; Li, B-M.; Chen, R-Y. Three new alkaloids from the fruits of *Morus alba*, *Journal of Asian Natural Products Research*, 2014; 16(5), 453-458.
- [7] Chu, Q.; Lin, M.; Tian, X.; Ye, J. Study on capillary electrophoresis-amperometric detection profiles of different parts of *Morus alba* L. *J. Chromatogr. A* 2006, 1116, 286–290.
- [8] De Freitas, M. M.; Fontes, P. R.; Souza, P. M.; William Fagg, C.; Neves Silva Guerra, E.; de Medeiros Nóbrega, Y. K.; Silveira, D.; Fonseca-Bazzo, Y.; Alberto Simeoni, L.; Homem-de-Mello, M.; Oliveira Magalhães, P. Extracts of *Morus nigra* L. leaves standardized in chlorogenic acid, rutin and isoquercitrin: tyrosinase inhibition and cytotoxicity. *Plos One*, 2016; 11(9), e0163130.
- [9] Kokate, C.K.; *Practical Pharmacognosy*. Delhi: VallabhPrakashan; 2008.p. 108-9.
- [10] AOAC. *Official Methods of Analysis*. 15th ed. Washington, VA: Association of Official Analytical Chemists; 1990.
- [11] Doshi, G. M.; Zine, S. P.; Chaskar, P. K.; Une, H. D. Solicitation of HPLC and HPTLC Techniques for Determination of Rutin from *Polyalthialongifolia* Thwaites, *harmacognosy Res.* 2014; 6(3): 234–239.
- [12] Chermat, R.; Thierry, B.; Micro, J.A.; Steru, L.; Simon, P. Adaptation of the tail suspension test of the rat. *J Pharmacol* 1986; 17:348-350.
- [13] Takamori, Tadano, T.; Yoshida, S.; Okuyama, S. Repeated treatment with imipramine, fluvoxamine and tranlycypromine decreases the number of escape failures by activating dopaminergic systems in a rat learned helplessness test *Life Sci*; 2001; 69:1919-1926.